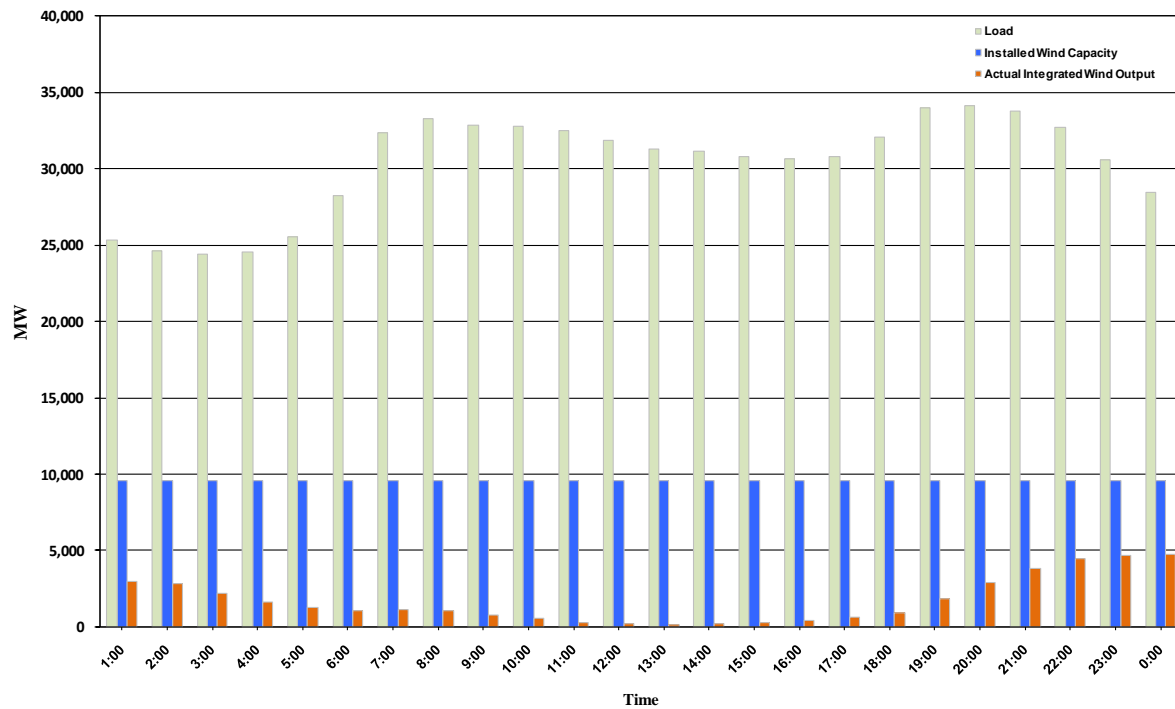




ERCOT Grid Operations Wind Integration Report: 11/18/10

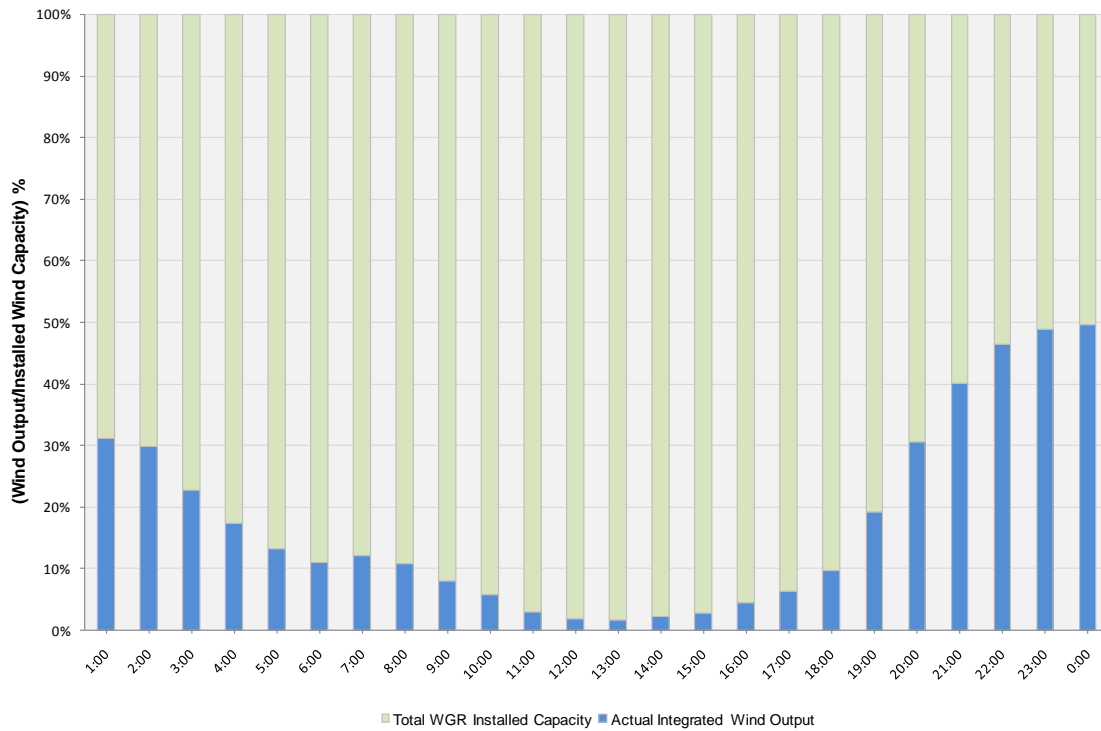
Peak Load	34,100 MW
Load Peak Hour	20
Wind Record 06/12/10	7016 MW
Max Wind value	4886 MW
Wind Peak Hour	22:09:16
Wind Integration %	15.62

Hourly Average Actual Load vs. Actual Wind Output
11-18-2010

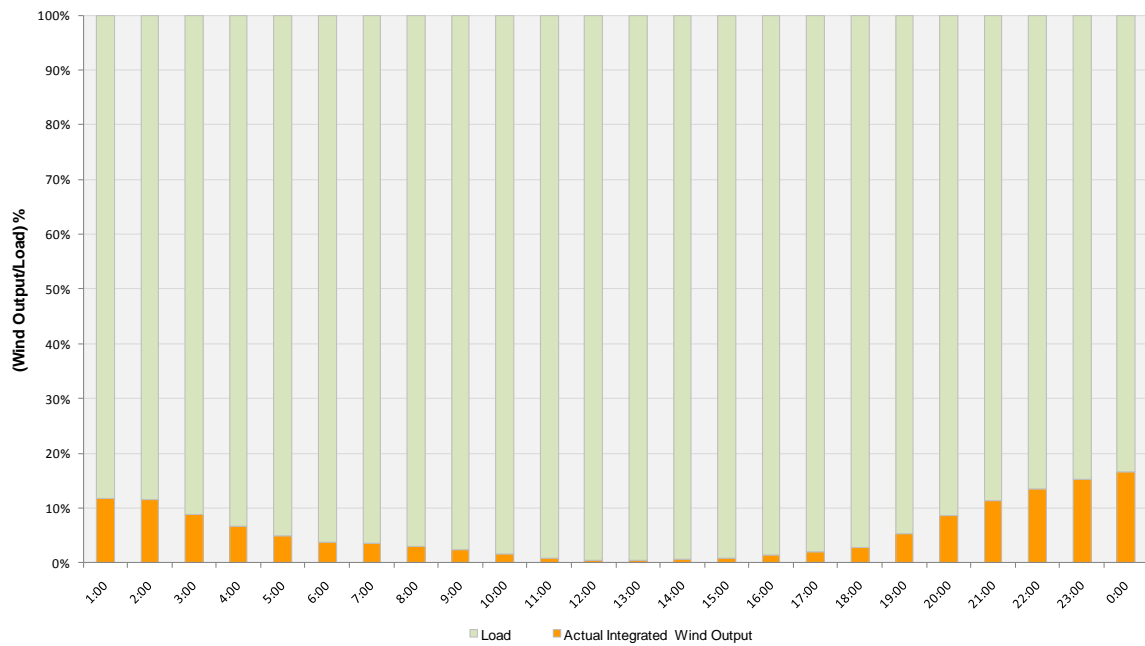




Actual Wind Output as a Percentage of the Total Installed Wind Capacity
11-18-2010



Actual Wind Output as a Percentage of the ERCOT Load
11-18-2010





ERCOT Load vs. Actual Wind Output 11/11/10 - 11/18/10

